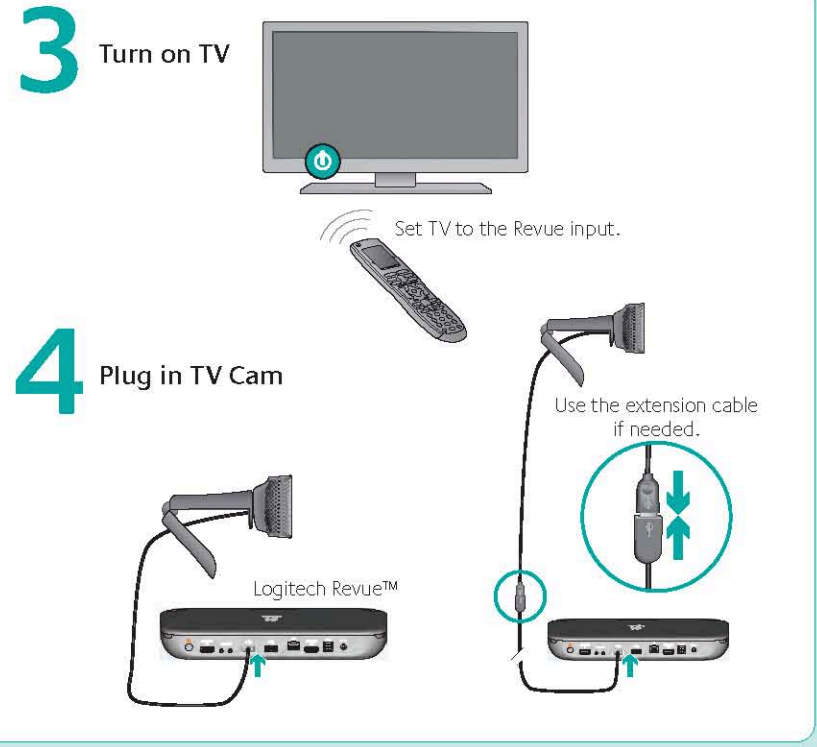
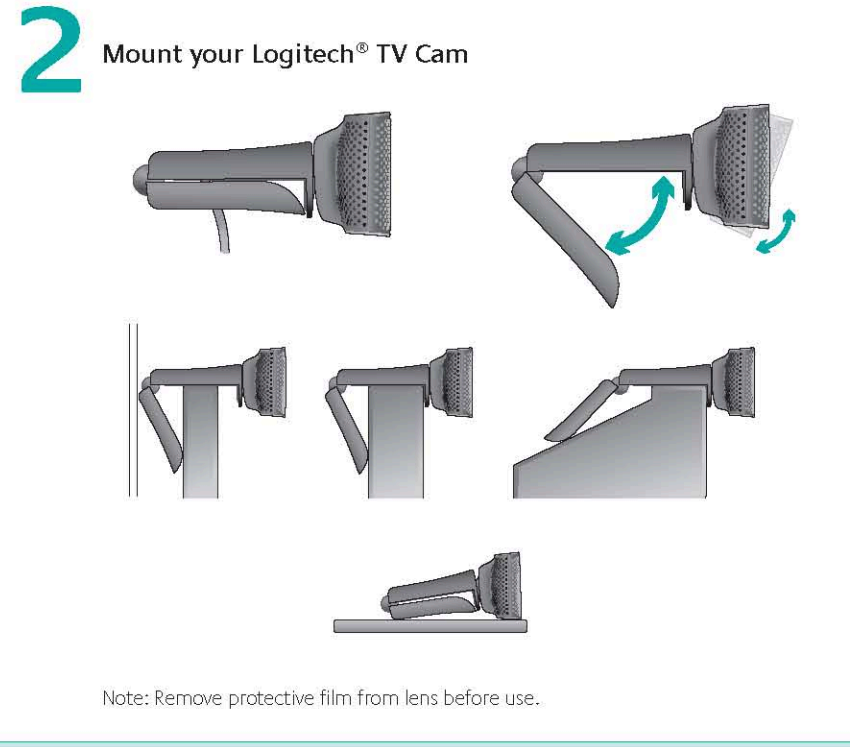
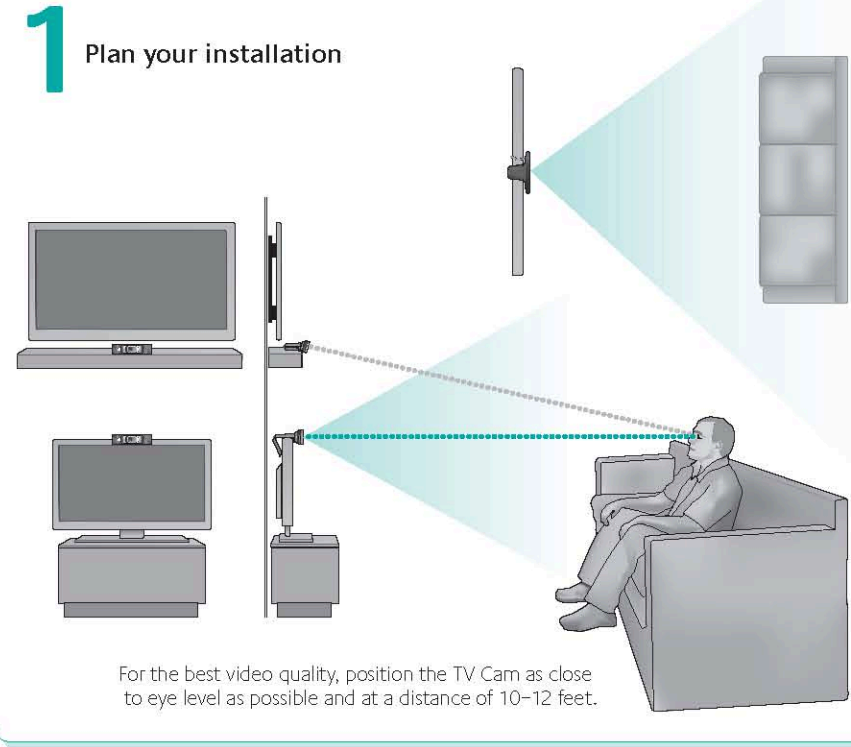




With the Logitech TV Cam, your connected TV is a TV that connects. And in just a few minutes you'll be making video calls right from your couch.

Logitech TV Cam



Now make yourself comfy. Settle in on the sofa.
And get ready to hang out. There's one tricky thing left to do...
deciding who to call first.

www.logitech.com

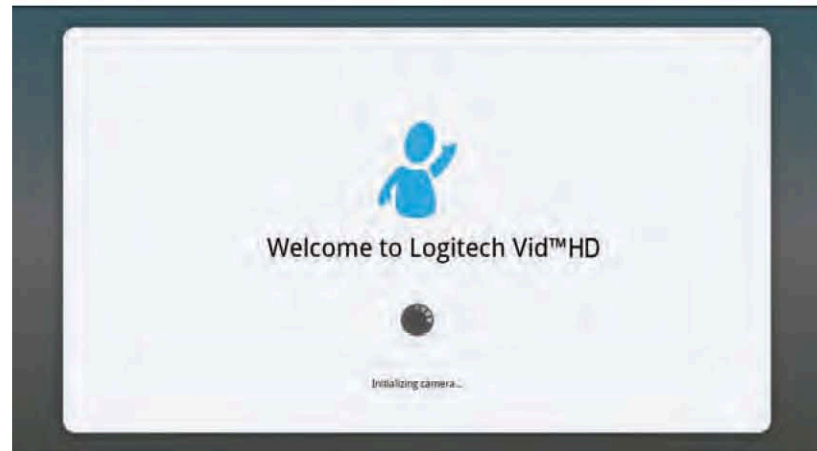
For assistance, call toll free: **1-866-954-5644**

Go to www.logitech.com/revue/support for current support hours

© 2010 Logitech. All rights reserved. Logitech, the Logitech logo, and other Logitech marks are owned by Logitech and may be registered. All other trademarks are the property of their respective owners. Logitech assumes no responsibility for any errors that may appear in this manual. Information contained herein is subject to change without notice.

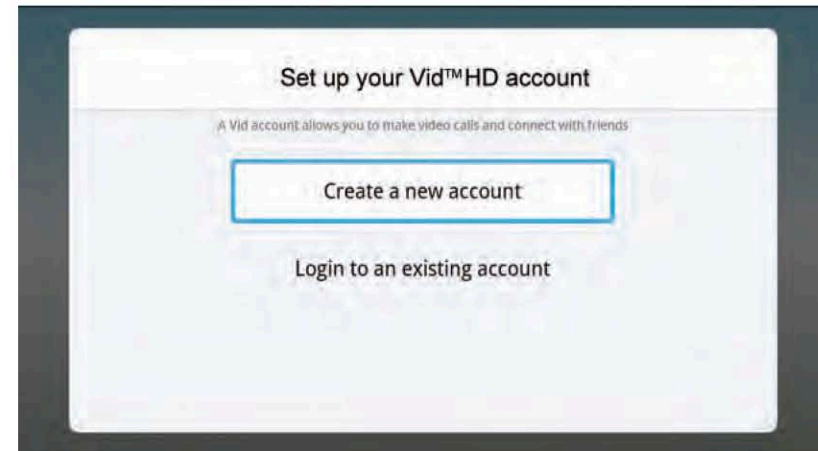
620-003042.005

Welcome



As soon as your TV Cam is plugged in, Logitech Revue automatically begins initializing your camera. After initialization, you are ready to set up your Vid HD account.

5 Set up your Vid HD account



Follow the on-screen prompts to set up a new account or to log in to your account and begin making video calls.

Logitech® Keyboard Controller features for TV Cam



1. Menu Displays TV selection guide when used with the FN key

2. Zoom OUT Zooms TV Cam out when used with the FN key during a video call

3. Zoom IN Zooms TV Cam in when used with the FN key during a video call

4. Back Asks if you want to end call

5. Directional Keys Navigates Up, Down, Left and Right

OK Selects highlighted options

6. Ch/Pg Up Zooms image in during a video call

Ch/Pg Down Zooms image out during a video call

7. Menu Displays video calling options within Vid HD

8. FN Enables yellow-highlighted key commands

Help with set up

Important: Before plugging in your Logitech TV Cam, you must complete the set up for your Revue.

Problem: I plugged in my TV Cam but Revue did not detect it.

Solution: Try the following:

1. Go to the Applications menu and select Vid HD. Does this begin set up?
2. If not, unplug your TV Cam and then plug it into a different USB port. Does this begin set up?
3. If not, unplug your TV Cam. Unplug your Revue from the power source. Wait 30 seconds and then plug the power supply back into your Revue. Once Revue is powered on, plug your TV Cam into an open USB port.

Problem: My TV Cam image is fuzzy or distorted.

Solution: Check the following:

1. Make sure that the protective film has been removed from the TV Cam lens.
2. Check the room lighting. Low light and high contrast light can cause problems for even the most advanced cameras.

For any other issues, including account creation or making a call, please visit: www.logitech.com/revue/support.